



# RESILIENT

## TOGETHER

2020 PROGRESS REPORT

CITY OF  
**RIVERSIDE**  
MISSOURI

*Upstream from ordinary.*



Together  
we will be  
ready  
for whatever  
tomorrow  
brings.



This last year, we lived and earned our brand of Upstream from Ordinary. There are so many adjectives that I could use to describe the places and situations we encountered, but PROUD rises to the top. Just like so many others, this year started with real momentum (highlighted in last year's report). But life happens, and we were soon faced with more important issues and challenges that took priority.

We shifted gears and our city staff developed, implemented and delivered preparedness plans with persistence and tenacity. They established protocols and processes to ensure the safety of all to make sure our community would be served, whatever the needs of the day ahead of them presented. These are our essential workers and our hometown heroes. Our success can be attributed to many things: strong relationships with local, county and state agencies; committed employees willing to adjust and adapt to new ways; fiscal adjustments and established stabilization reserves; effective internal and external communications; and a caring community ever ready to reach out to help others.

Riverside has a history of persevering through challenging times.

Whether it's protecting the health and safety of our community or pursuing growth and redevelopment opportunities, we are in this together. And together we will be ready for whatever tomorrow brings. We are Upstream from Ordinary!

**MAYOR KATHY ROSE**

# Upstream from Ordinary. As Always.

It is through adversity that the true strength of a community can be measured. The dawn of 2020 brought unprecedented challenges and uncertain times to the world, our country, and our city. How did Riverside respond? The only way we know how: with determination and resiliency. At the onset of the pandemic, members from every city department came together to brainstorm creative solutions to assure that no resident or business owner was left wondering, "now what?" when help was needed with something routine or emergent.

As always, we took the Upstream from Ordinary approach. And we continue to live our mantra even today. **It's how we'll remain resilient. Together.**



We checked in on local businesses to make sure they were prepared to keep their employees and customers safe.



We kept improving the trails and E.H. Young Riverfront Park as planned.

## COVID-19 RESPONSE TEAM

We launched a COVID-19 Response Team to guide operations and coordinate safety measures that would meet the needs of the entire community.



When the kids couldn't go to the Easter Bunny, we brought the bunny to them, by firetruck.



CREATIVE SOLUTIONS  
UPSTREAM FROM ORDINARY

2020 RESILIENCE

COVID-19 RESPONSE TEAM TOGETHER  
GUIDANCE COMMUNITY

DETERMINATION  
STRENGTH

SAFETY

CLARITY

And, because we know there's nothing worse than silence when you have questions, we used social media to provide guidance and clarity.

“Anytime you go through adversity, it teaches you lessons about how to overcome, be strong, and think differently to spark new ideas that improve how things are being done.”

– Noel Bennion, Riverside Capital Projects and Parks Manager

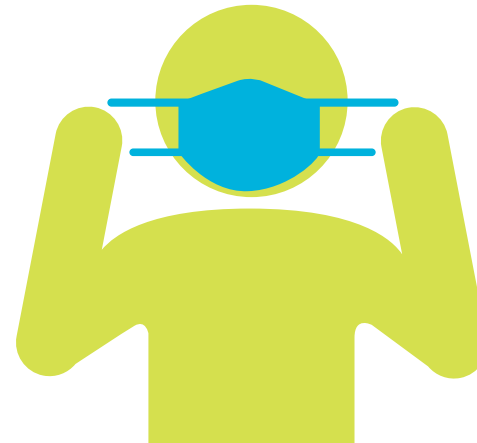
# One Community. One Response.

In 2020, keeping the public safe took on a whole new meaning for Riverside's fire and police departments. In addition to planning for and responding to emergencies, our first responders also had to develop proactive and sustainable ways to safeguard the public's health — and their own — while answering calls during a global pandemic.

Jeff Taylor, Assistant Fire Chief and Director of Emergency Management, leads the effort to keep our community safe. From day one, he worked closely with the Platte County Health Department and the Mid-America Regional Council to keep the city's COVID-19 Response Team apprised of the latest safety recommendations. And, it's Jeff who worked to ensure that our first responders, employees and local businesses are stocked with personal protective equipment.



Checking staff temperatures



Requiring staff to wear masks when interacting with the public



Limiting interaction between staff

← 6FT →

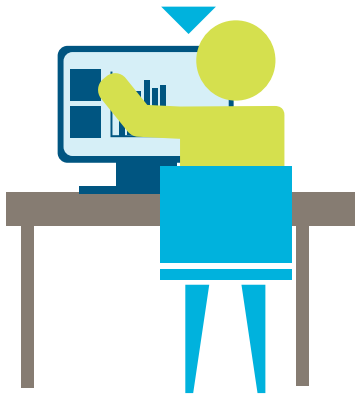




Securing the building from outside visitors

“ We were in a great situation to help because we had enough concentrate to make tens of thousands of gallons to help supply first responders, schools and others in the area.  
– Doug Morgan, Eaton Chemical Director of Operations

Having staff work from home



Taking non-violent reports over the phone



Disinfecting vehicles, equipment & facilities

Protecting Riverside’s emergency vehicles and the public safety building from the virus posed another challenge due to the shortage of disinfectants across the country. Turns out the solution was right here at home, thanks to local company Eaton Chemical. Not only is its product approved by the Environmental Protection Agency for use against COVID-19, but it is also safe to use on electronics, making it ideal for protecting vehicles and bunkrooms alike.

# Explore Outdoors. Unwind Awhile.

This spring, we, along with the rest of America, stayed in to stay safe. But as the weather warmed and stay-at-home orders relaxed, Riverside's extensive trails and beautiful parks offered up an abundance of safe, socially-distanced ways to get out and be active.

## Journey to a Reimagined Park

With impeccable timing and brand-new amenities to share, E.H. Young Riverfront Park reopened this summer. Our community built this destination, and here's how it all came about:



**January 2018**

City hires design firm, Confluence, to consult on a master plan to bring new amenities to E.H. Young Riverfront Park.



**March 2018**

Residents share feedback through community open houses and online surveys to help craft the E.H. Young Riverfront Park Master Plan.



**July 2018**

Board of Aldermen review and approve Master Plan with elements residents ranked highest from three original concepts.



**July 2019**

Construction begins on improvements designed for the community, by the community.







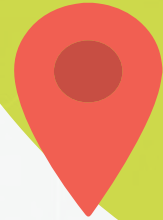
### New: Tobacco-Free Policy

In early March, the Board of Aldermen implemented a tobacco-free policy that prohibits smoking, vaping or use of any other tobacco products in all parks and trails.



### Upgraded: Linear Trail

In July, a \$25,000 Platte County Parks & Recreation Outreach Grant allowed the City to upgrade the Linear Trail. Crews replaced the uneven and cracked asphalt surface with new concrete, which has become the city standard across recent trail projects.



### New: Jumping Branch Trail

In late December, the City opened the new Jumping Branch Trail. Running alongside the Jumping Branch Creek, the trail connects the Gate Woods neighborhood to Renner Brenner Park and the rest of Riverside's extensive trail network.



### June 2020

The park reopens with new amenities, including a destination playground, eight pickleball courts, and an off-leash dog park.



### July 2020

Cadettes from Girl Scout Troop 1840 construct and install a Gaga Ball Pit in the park to earn their Girl Scout Silver Award.

# Outside is Essential.

## 83%

of adults find exercising at local parks, trails and open spaces essential to maintaining their mental and physical health during the COVID-19 pandemic.

## 68%

of parents find exercising in parks and green spaces very or extremely essential to relieve stress and remain healthy during this crisis.

Learn more: [nrpa.org/ParkPulse](https://nrpa.org/ParkPulse)

# Board of Aldermen



Mayor Kathy Rose



Al Bowman



Jill Hammond



Nathan Cretsinger



Dawn Cockrell



Aaron Thatcher



Salvatore LoPorto

## WARD 1

## WARD 2

## WARD 3

## FY2020-21 Revenue Budget



Gaming Revenue	\$5,610,000
TIF From Horizons	\$8,136,440
Real Estate Income	\$3,800,000
Taxes	\$2,928,897
Other Revenue	\$2,398,317
<b>TOTAL REVENUES</b>	<b>\$22,873,654</b>

## Expenditure Budget



Salaries & Benefits	\$8,070,589
Contractual Services	\$3,447,938
Commodities	\$439,630
Capital Equipment	\$274,250
Debt Service	\$4,913,974
Community Development	\$2,000,000
Tourism Fund	\$150,000
Capital Improvement	\$8,609,000
<b>TOTAL EXPENDITURES</b>	<b>\$27,905,381</b>

## Capital Improvement Projects



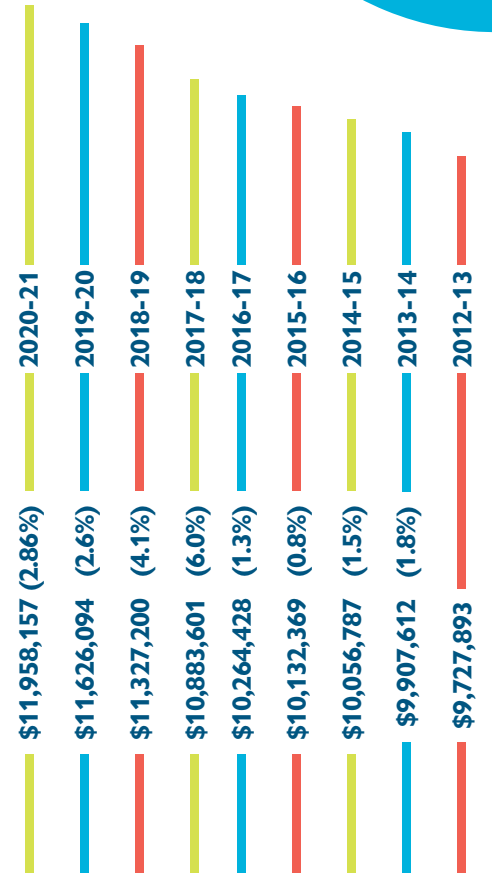
Infrastructure Maintenance	\$1,800,000
Public Facilities	\$3,019,000
Parks & Trails	\$1,460,000
Equipment & Software	\$1,130,000
Horizons Infrastructure	\$1,200,000
<b>TOTAL</b>	<b>\$8,609,000</b>

## Equipment



2 Police Vehicles	\$ 80,000
Public Works Equipment	\$34,200
Police Equipment	\$35,000
Fire Equipment	\$75,050
Computer & Printing Equipment	\$50,000
<b>TOTAL</b>	<b>\$274,250</b>

## General Budget Growth



# City Budget



CITY OF  
**RIVERSIDE**  
MISSOURI

[RiversideMo.com](http://RiversideMo.com)